

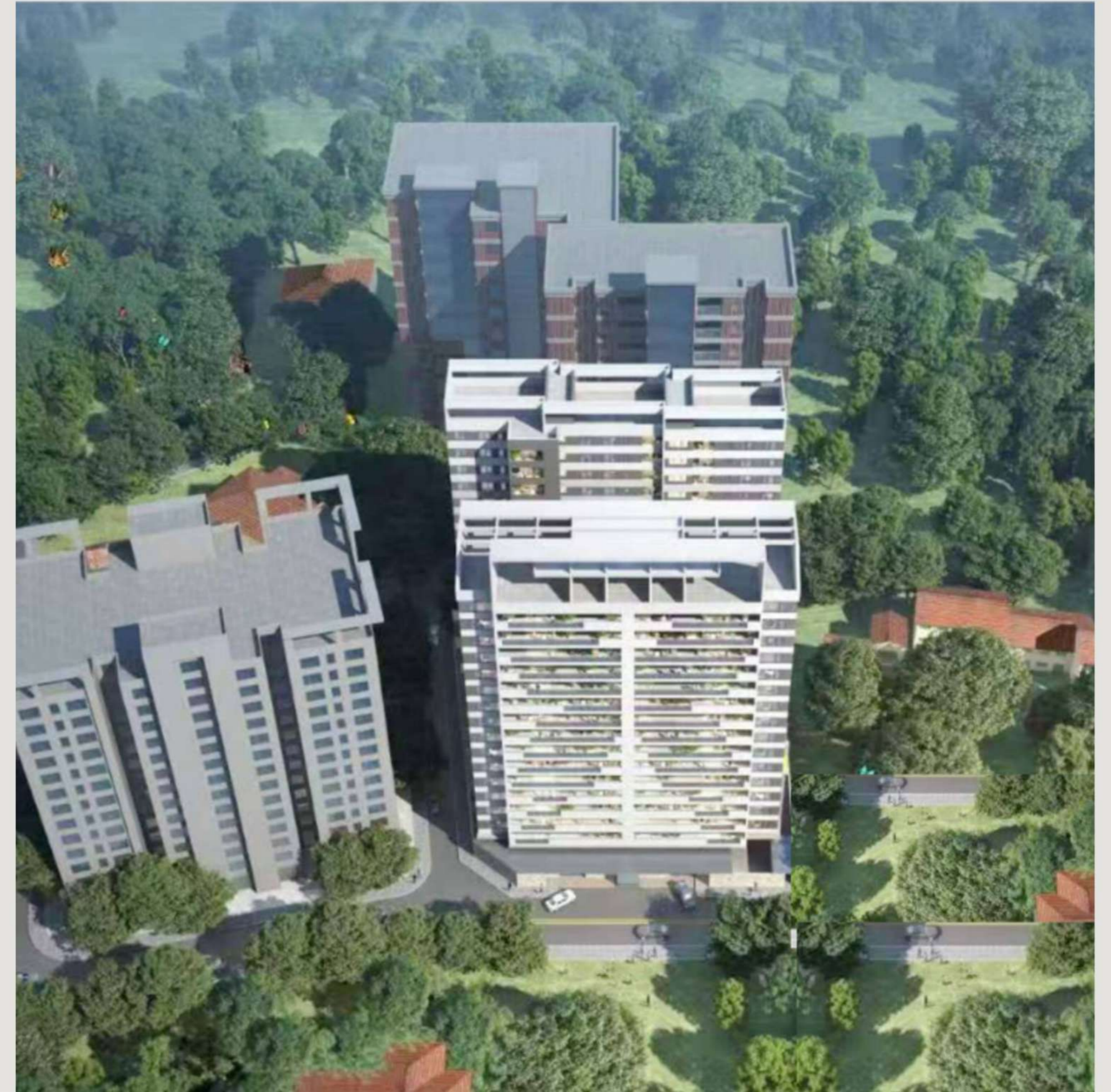


BUTTERFLY PALACE
WESTLANDS

BUTTERFLY PALACE

In the heart of General Mathenge Drive, Westlands, lies a home unlike any other in a lush green neighborhood.

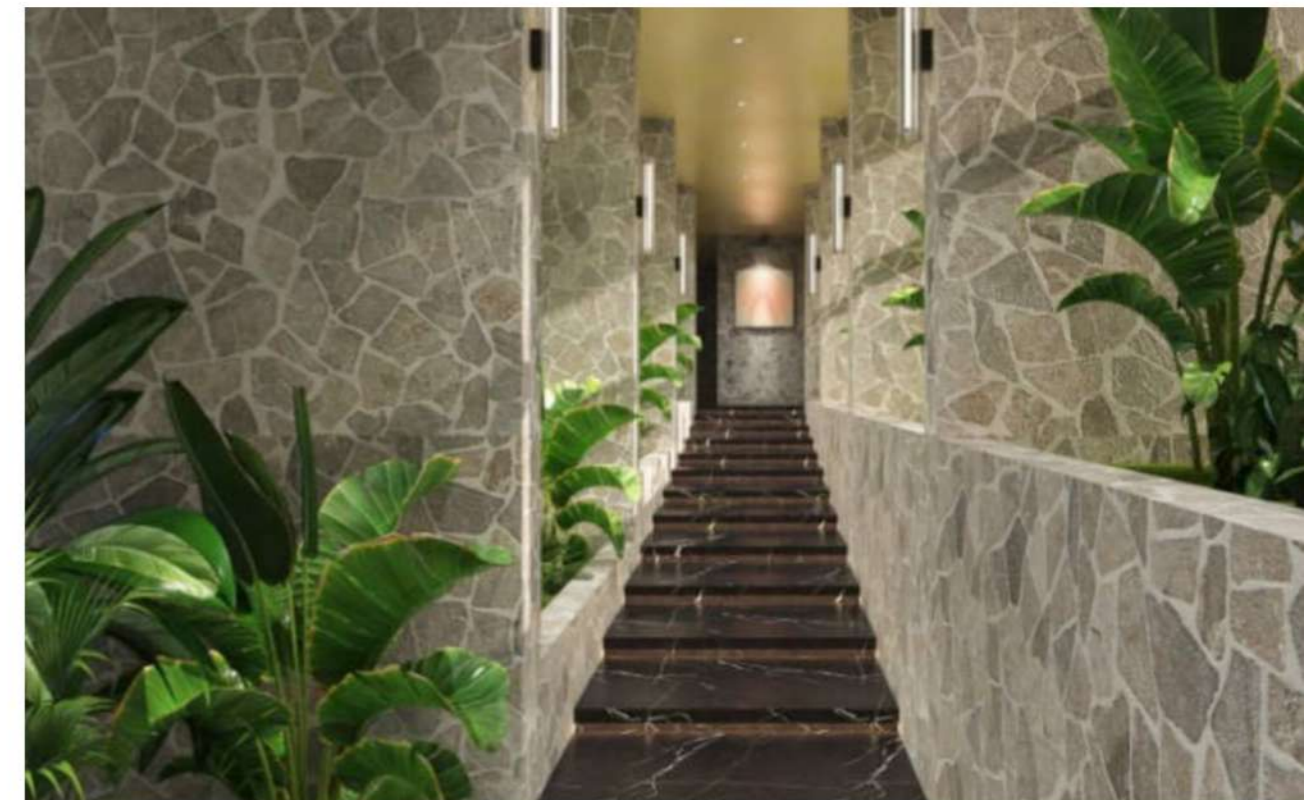
This quiet enclave holds fine 2, 3, and 4-bedroom dwellings, each a world apart. Every home opens a way to taste nature in full – with greenery all around and butterflies in the air. Butterfly Palace draws its name from this setting, where nature is not beside you, but within you. Here, nature is all.





NATURE INSPIRED

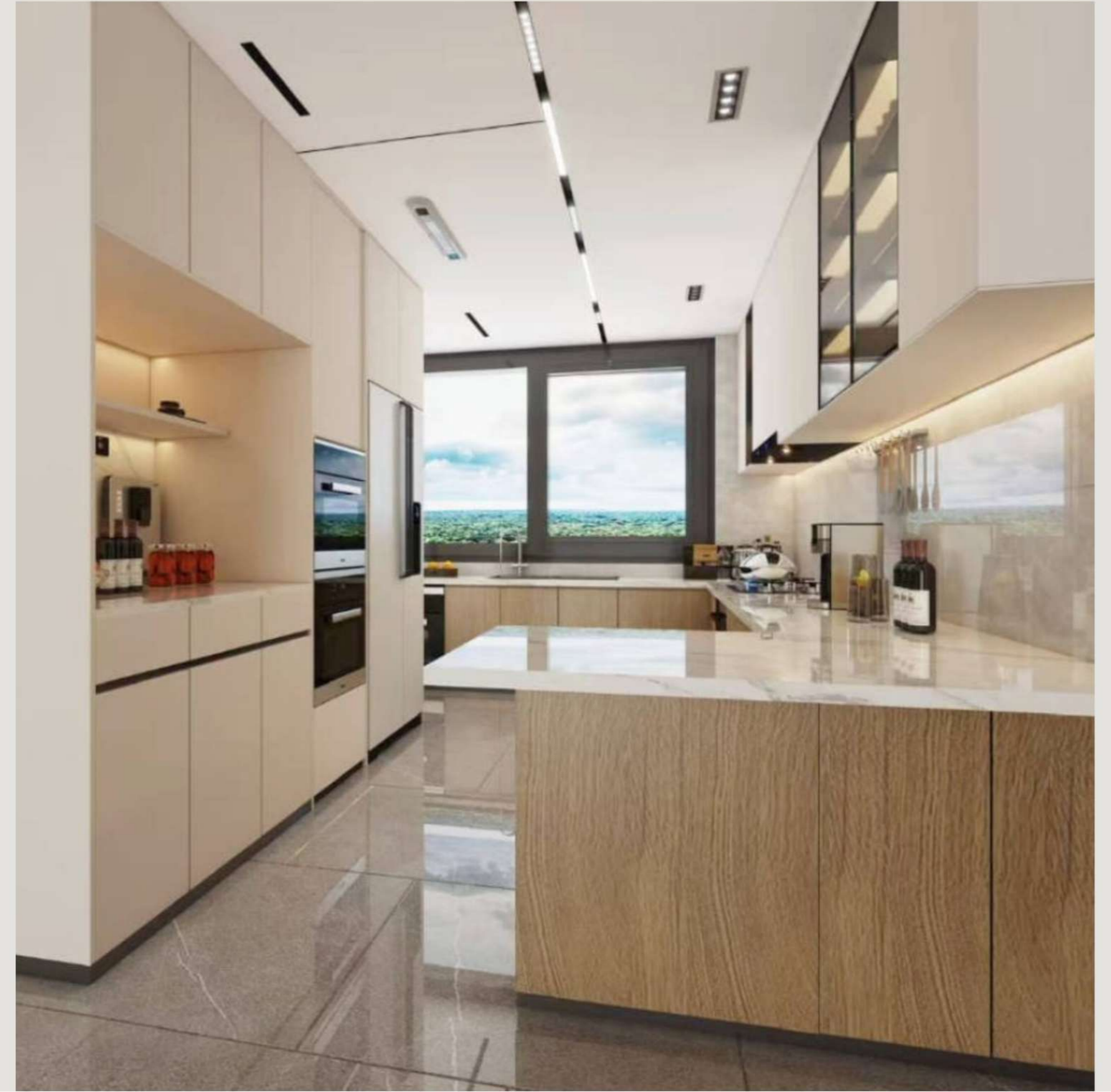
In every dwelling, sunlight streams through floor-to-ceiling windows, filling interiors wrapped in warm tones. Beyond the glass, it feels as though nature itself climbs upward and flows indoors. The outdoor balcony extends the living space into nature's embrace, while open views reveal the leafy, sculpted gardens





CULINARY OASIS

Begin your day in the sunlit breakfast nook, where mornings linger over coffee. The open-plan kitchen invites conversation, while a chef's kitchen and butler's pantry make every gathering effortless.







SERENE RETREAT

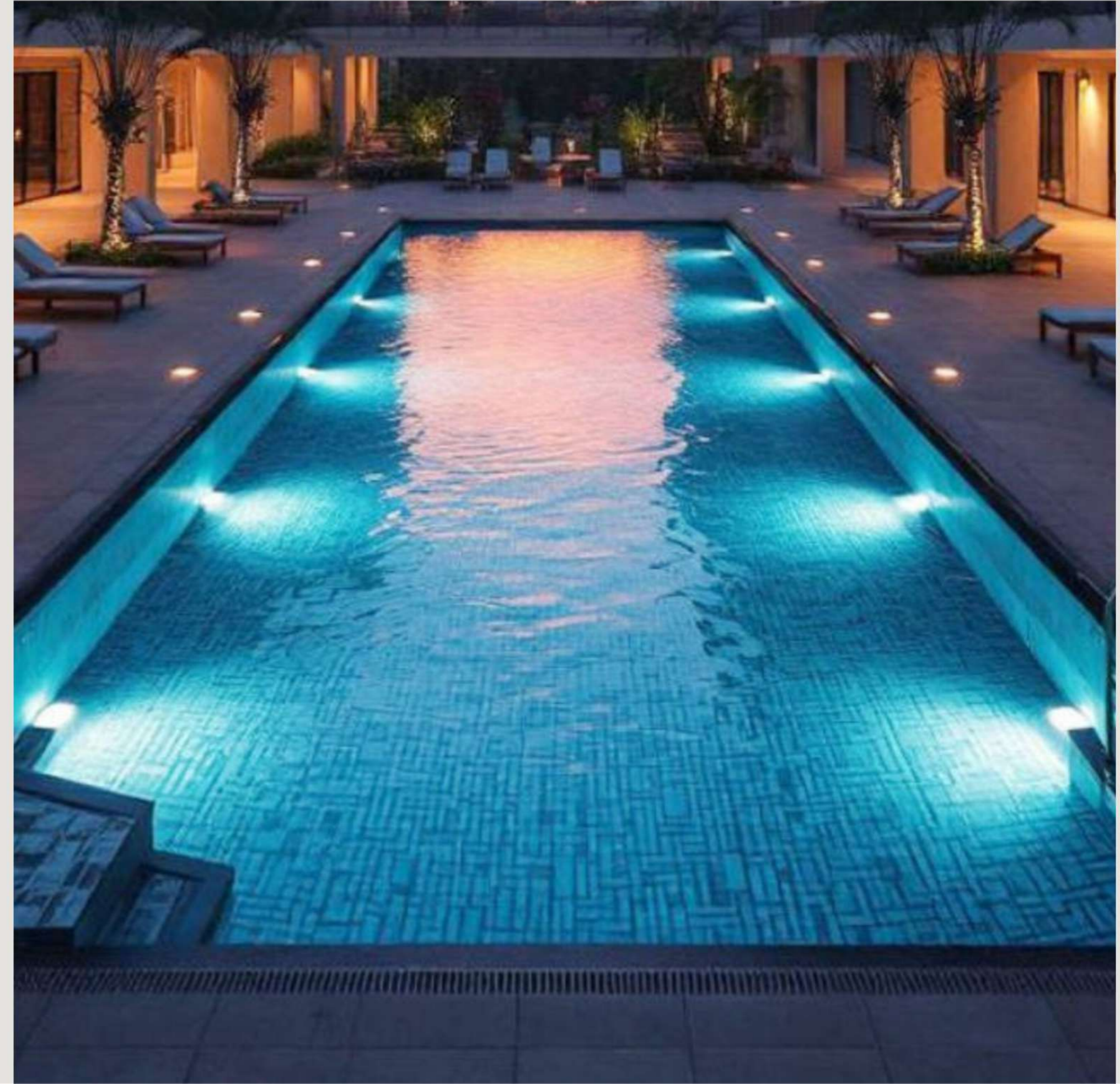
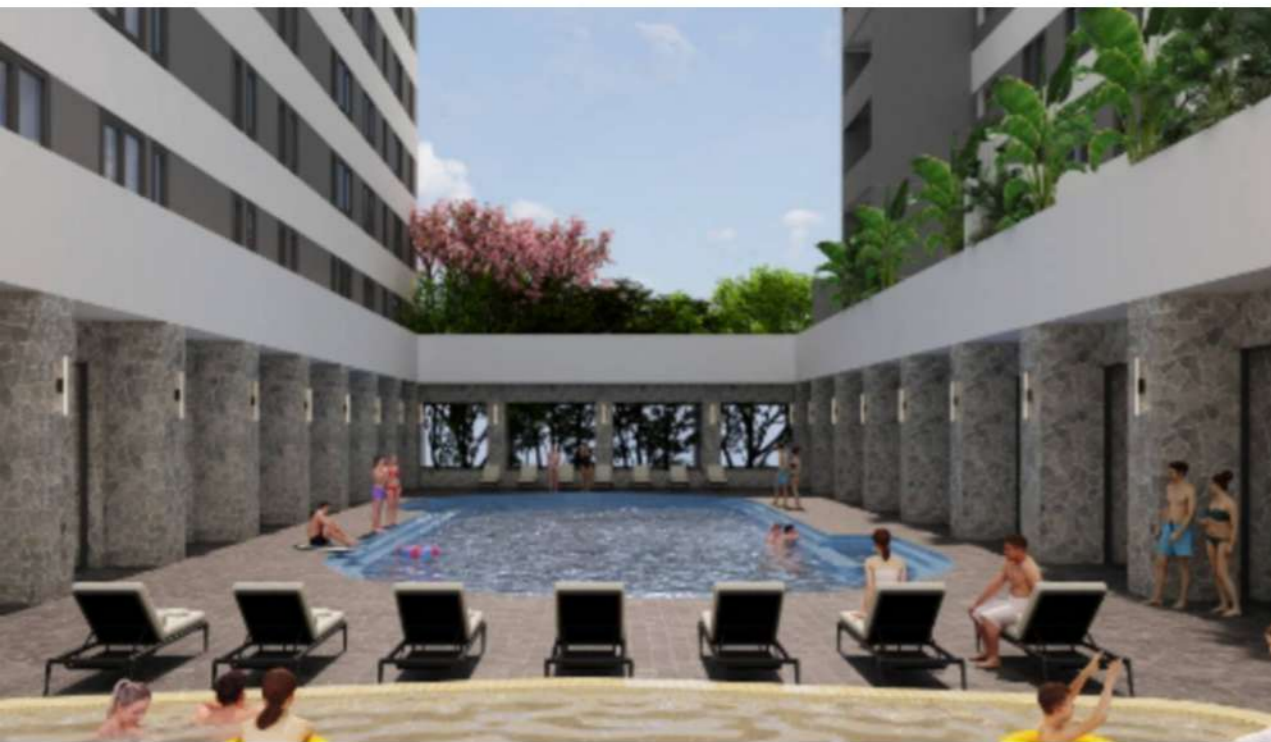
The master bathroom is a place of calm, where a freestanding tub allows slow moments of relaxation and fine finishes bring quiet beauty. Each ensuite bathroom carries the same feeling, designed as a private space for rest and renewal. Here, daily routines become moments of ease, wrapped in comfort and gentle luxury.





SILENT BLUE

The pool is a mark of pure exclusivity, a calm stretch of clear water reserved for moments of ease. Its clean lines and refined finish speak of quiet luxury, offering a private space where leisure is unhurried and serene. Here, every swim feels set apart, an experience shaped for those who value privacy and grace.



NOBLE WELCOME

The reception at Butterfly Palace carries a quiet dignity. It is a place where arrivals are unhurried and the air holds a sense of grace. Close by rests the restaurant, set apart for slow meals, fine service, and easy privacy. Together they shape the beginning of life that's calm, tasteful, and rare.



EXPLORE BUTTERFLY PALACE

4 BEDROOM ALL EN-SUITE

378SQM



- All en-suite
- Walk in closet
- Master bathroom
- In-built bathtub
- Full length balcony
- Open plan kitchen
- Cloakroom
- DSQ

EXPLORE BUTTERFLY PALACE

3 BEDROOM ALL EN-SUITE

236 SQM



- All en-suite
- Walk in closet
- Master bathroom
- Spacious balcony
- Open plan kitchen
- Cloakroom
- DSQ

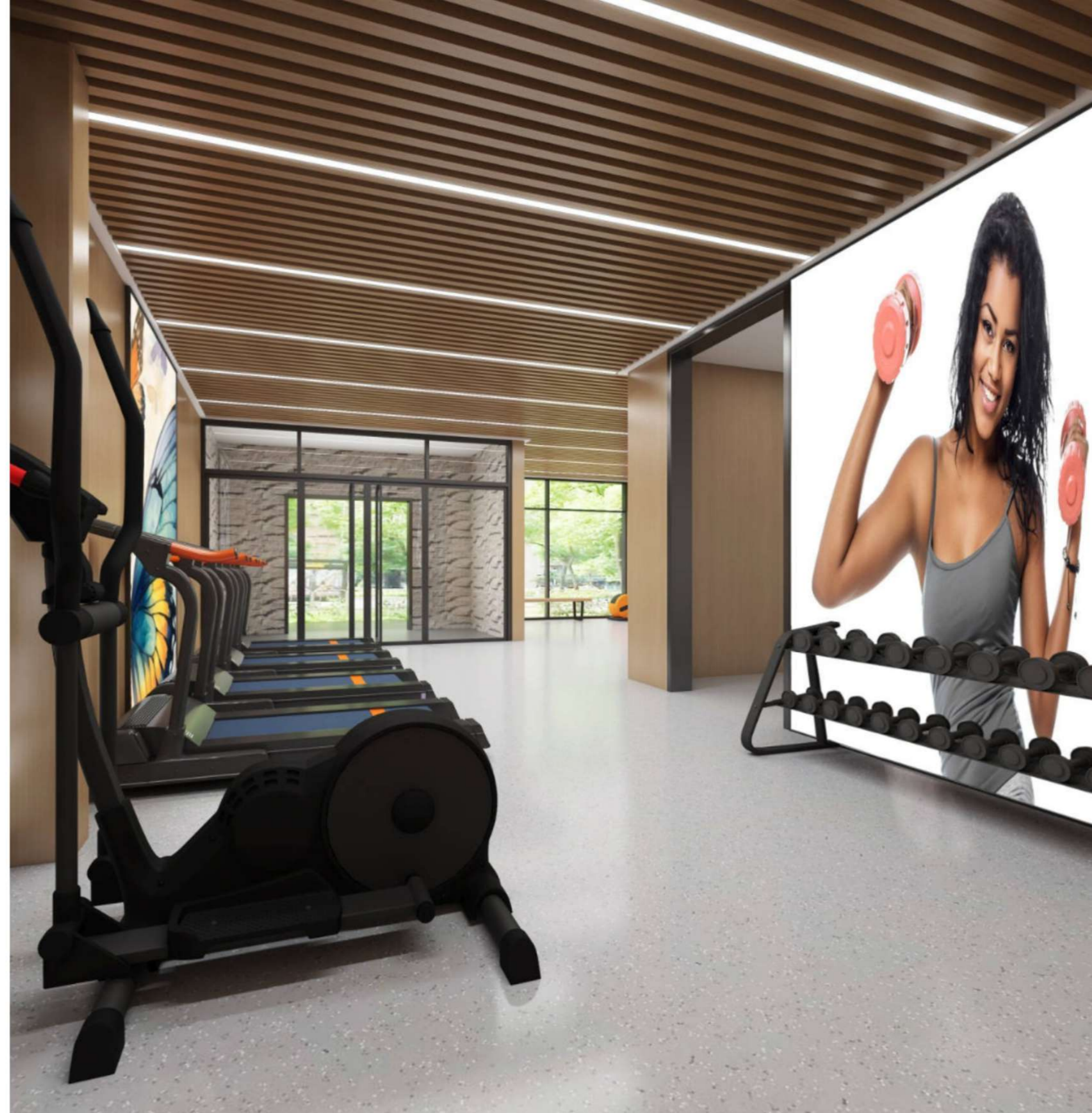
EXPLORE BUTTERFLY PALACE

2 BEDROOM ALL EN-SUITE

169 SQM



- All en-suite
- Walk in closet
- Master bathroom
- Spacious balcony
- Open plan kitchen
- Cloakroom
- Laundry Area





Development Consultants

AFRIMAC INTERNATIONAL LIMITED



AFRIMAC

Jalaram Road, Westlands.

CONTACT: 0721 939 689

EMAIL: sales@afrimacinternational.com

WEBSITE: www.afrimacinternational.com

Afrimac International Limited for themselves and for the vendors of this property whose agents they are, give notice that these particulars do not constitute any part of an offer or a contract nor are these guaranteed to be accurate under any circumstances