



HEPHÉ PALACE

Development Consultants



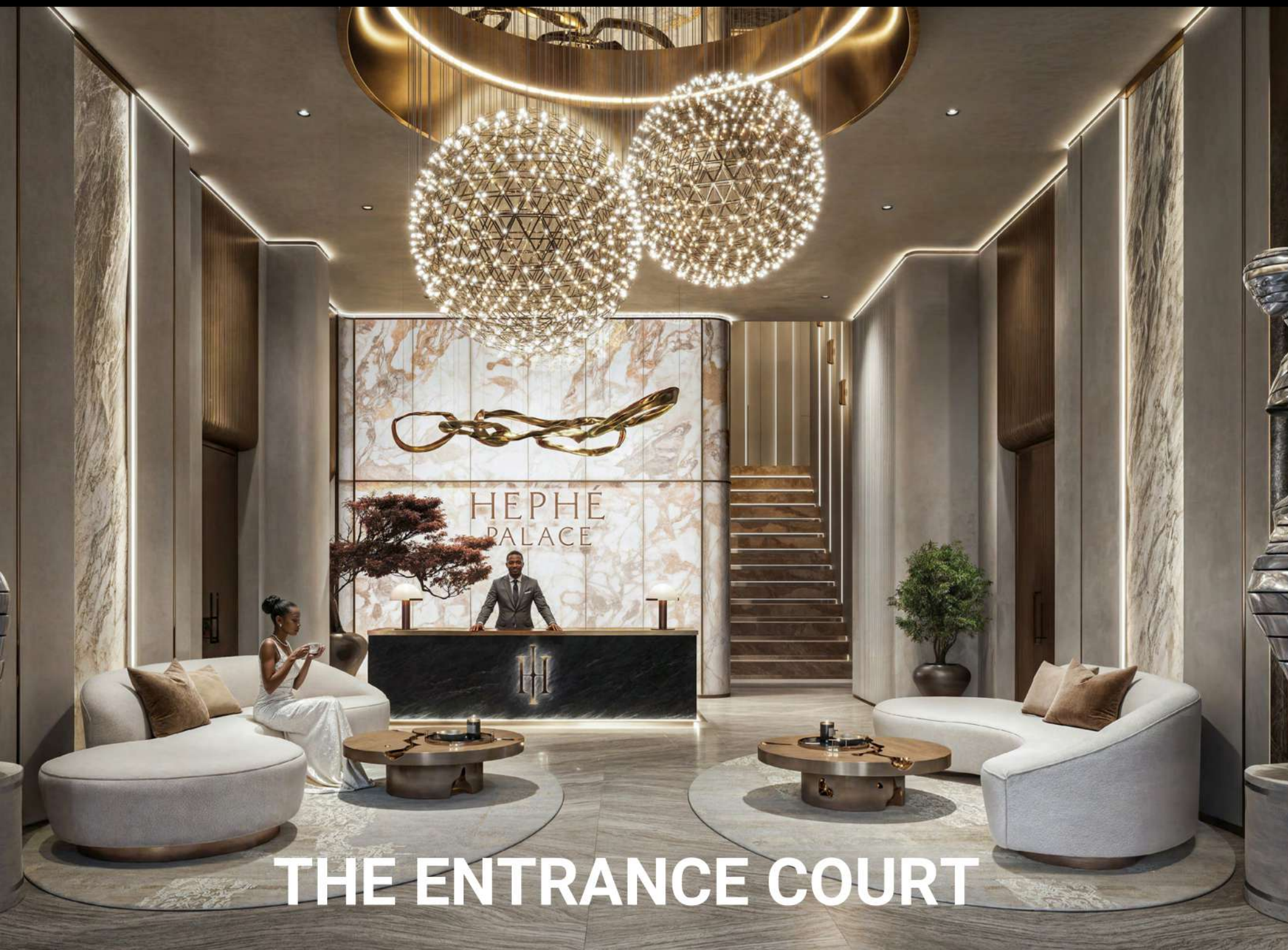
Tel.: +254 721939689 | sales@afrimacinternational.com | www.afrimacinternational.com

Disclaimer: The information contained in this brochure is an artist's concept. The developer reserves the right to make changes or alterations at their sole discretion. This does not constitute an offer and / or contract of any type. Every effort has been made to ensure the accuracy of information in this brochure.

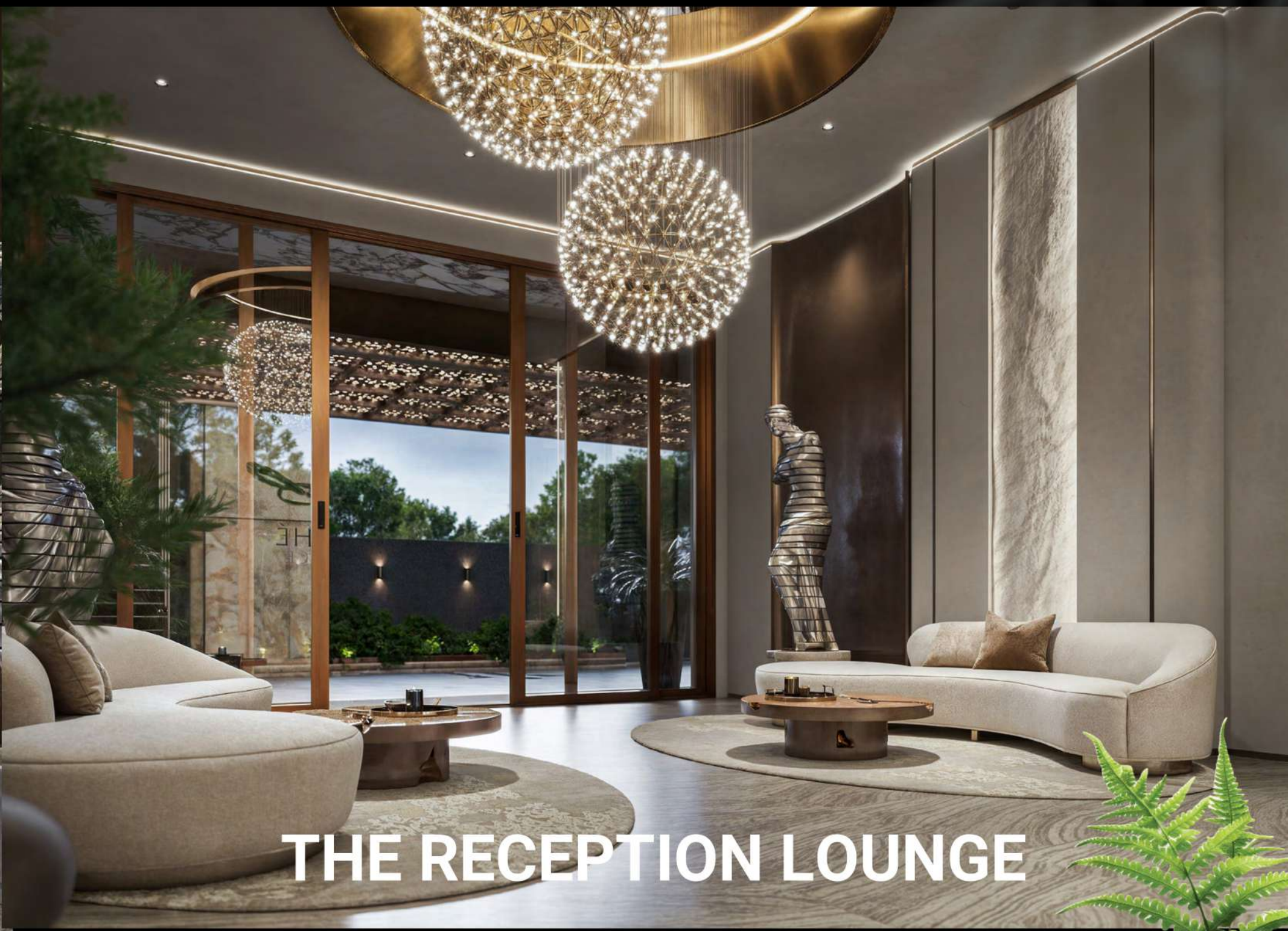


THE UNFOLDING

The entrance to Hephè Palace unfolds in layers, not all at once but step by step. From the street, all you see is a quiet facade, held in place by greenery. Then you pass inside. The forecourt opens up, with a sculpted ceiling above and a fountain below, a simple gesture that draws you forward. Through the glass, you catch only a glimpse of the lobby beyond, soft, restrained, half hidden. It never shows everything at once.



THE ENTRANCE COURT



THE RECEPTION LOUNGE

THE HEART OF HEPHÈ

The courtyard at Hephè Palace feels like a stage, though nothing about it is theatrical. Water, light, and greenery simply meet there. The pool curves in a natural shape, with small lights tucked into its edges that come alive at night. Islands of trees rise from the water, softening the architecture. Seating and wooden decks follow the landscape rather than fighting it. On one side, a bar counter brings a gentle rhythm for drinks and casual gatherings. On the other, a circular seating area turns inward, made for quiet moments and doing nothing at all.

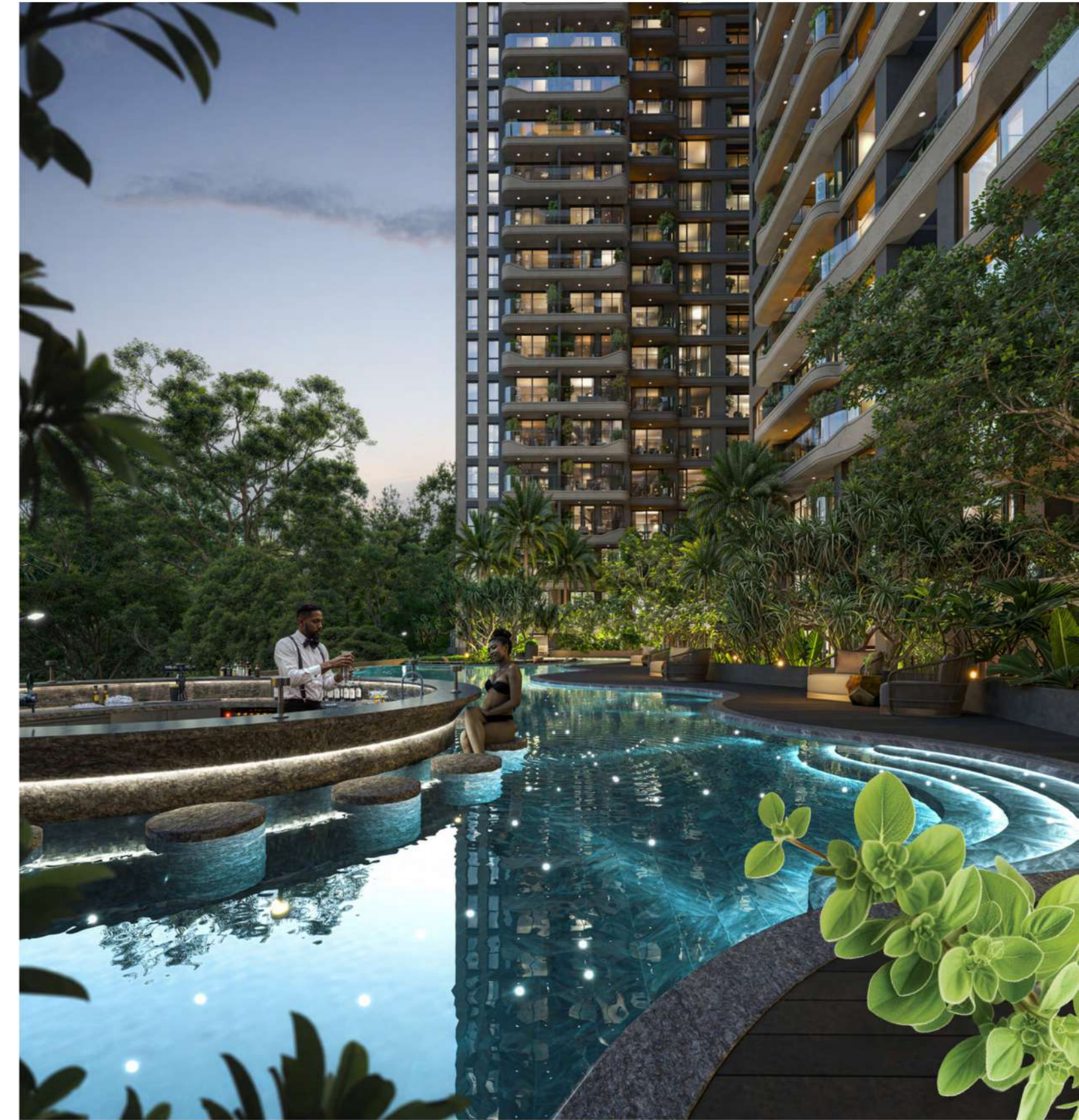




OPEN. INVITING. UNFORCED. THE COURTYARD LIVES WITH YOU.

A PERCH ABOVE THE QUIET

The balconies open wide, each one a quiet perch above the forest. Morning coffee or an evening glass of wine feels different when the trees are this close. Below, the courtyard lives. Light fills the space from morning until dusk. The city sits at a distance, seen but not heard. Up here, privacy is complete, yet nothing feels closed off. Open railings, clear sightlines, a bar on each side of the pool. You never have to leave the water to be looked after. Views like these stay with you. Life around the pool simply unfolds.





THE QUIET LUXURY OF SPACE

These interiors are made for balance. Rooms feel open and full of light, finished with materials that only get better with time. The kitchen, dining, and living areas flow into one another but each holds its own purpose. A home that moves with you. Step onto the wide balconies and the city opens up. You get the comfort of what's inside and the sweep of what's beyond.



3 BEDROOM RESIDENCE





KITCHEN

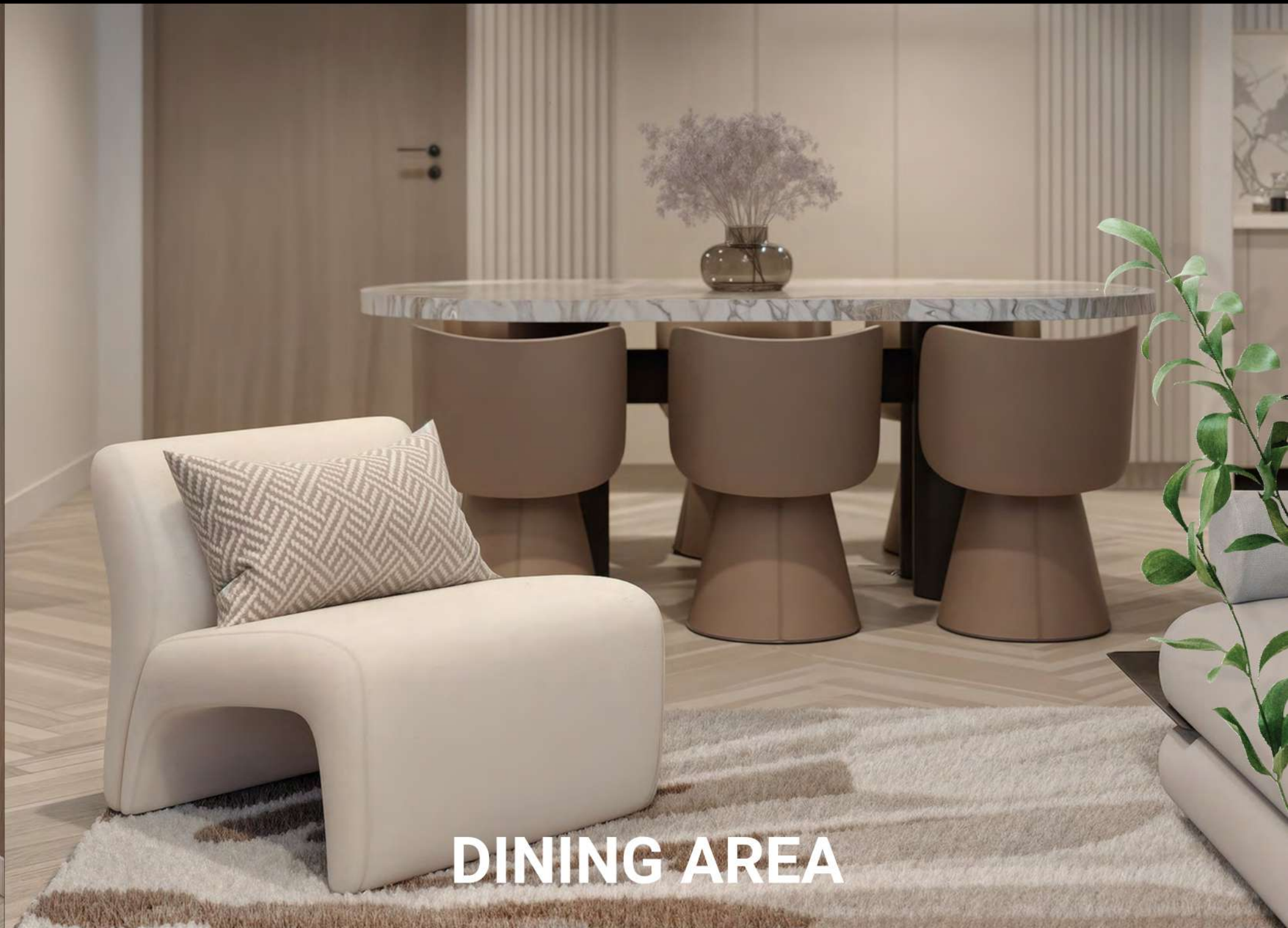


BEDROOM





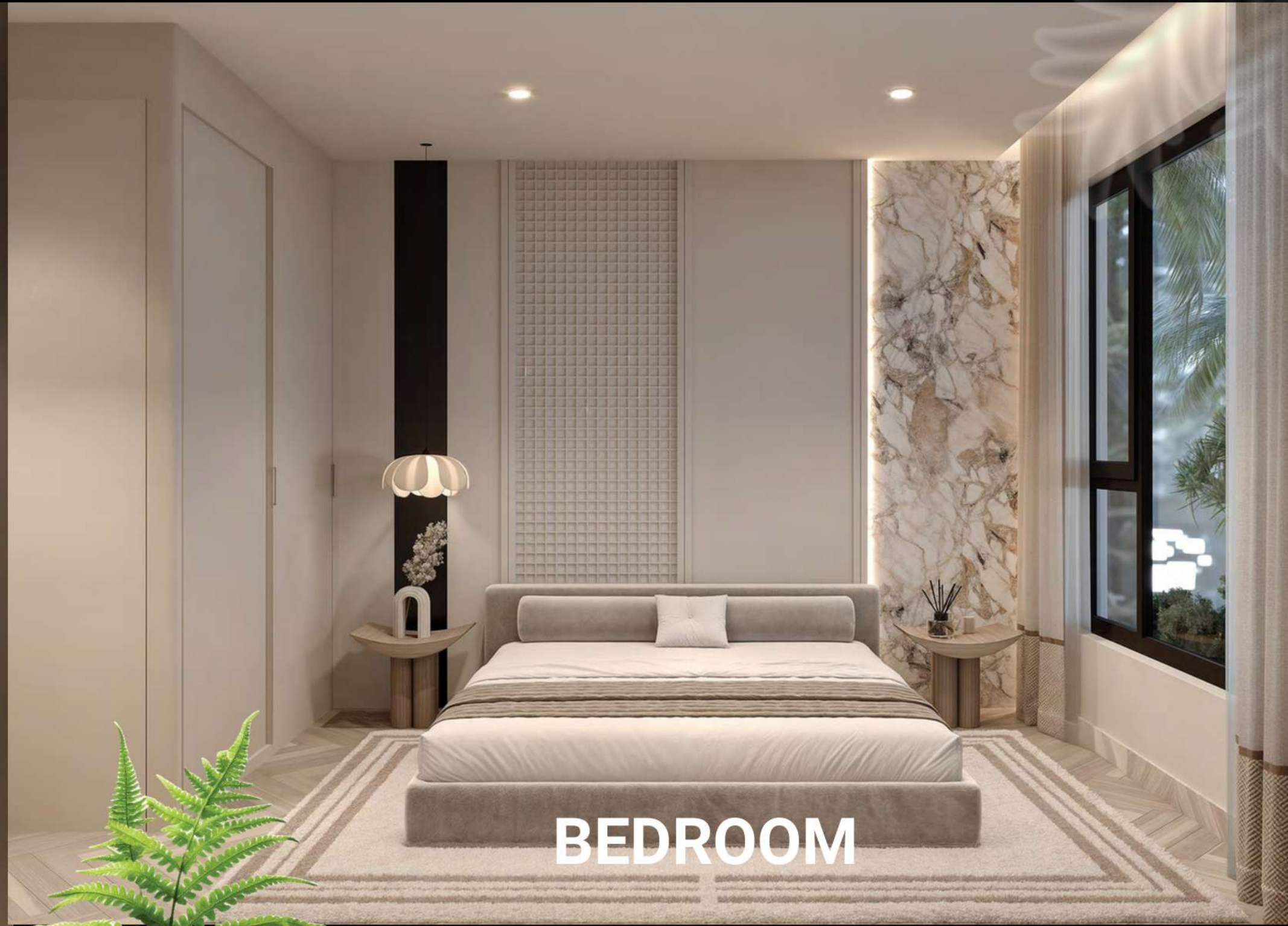
2 BEDROOM RESIDENCES



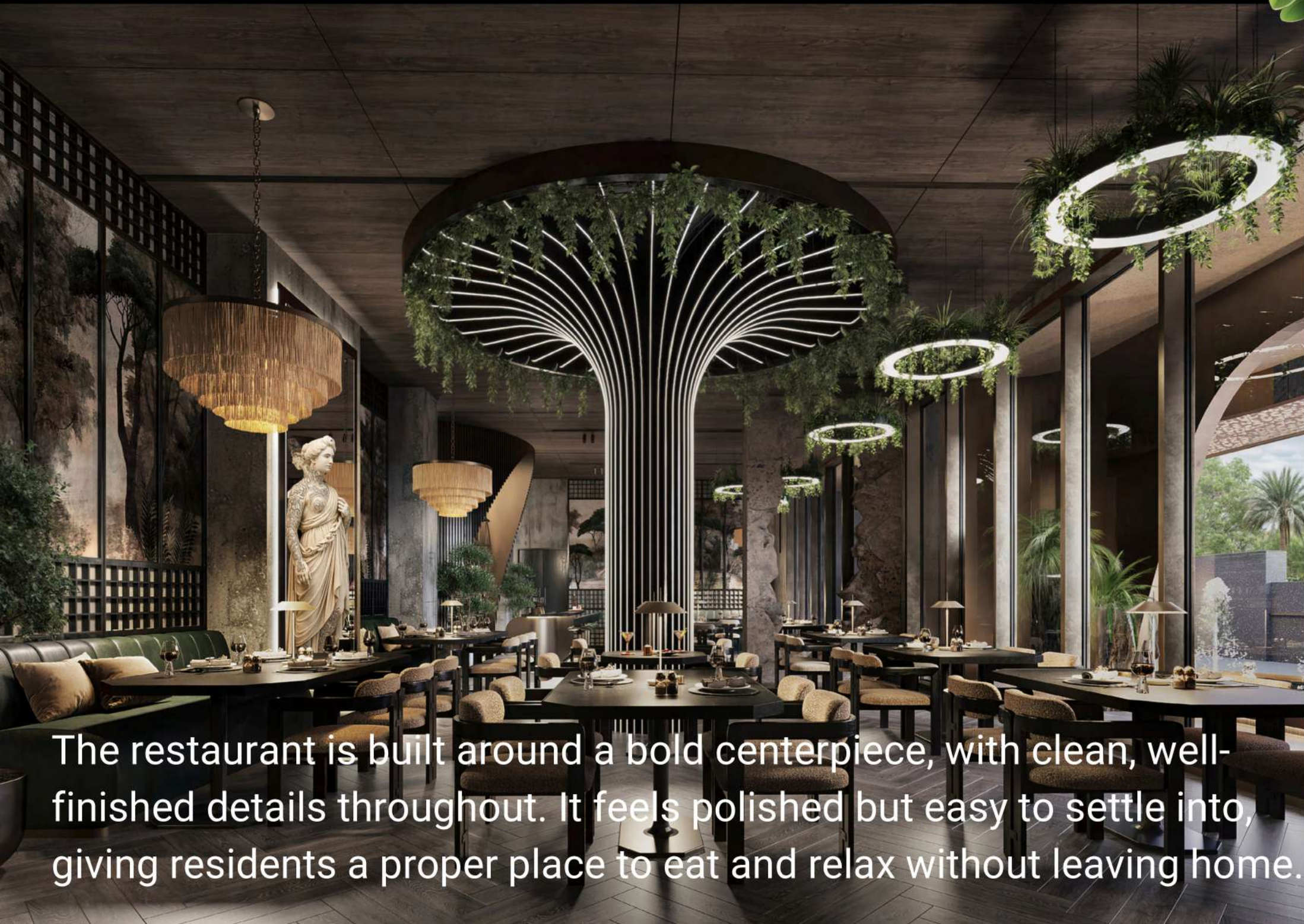
DINING AREA



KITCHEN



BEDROOM



The restaurant is built around a bold centerpiece, with clean, well-finished details throughout. It feels polished but easy to settle into, giving residents a proper place to eat and relax without leaving home.



INSIDE AND BEYOND

At Hephè Palace, the amenities feel like part of your own home. The shared spaces are simply well done and make everyday living easier. Whether you're working out, taking a break, or grabbing a meal. It all just works, in one place.



THE RESTAURANT BAR AREA

With golden arches and intricate details, the bar is a sculptural centerpiece made for elegant evenings.



THE RESTAURANT BAR AREA

Fitted with modern equipment for strength, cardio, and flexibility, the gym is bathed in natural light and open views, making training feel less like a routine and more a part of your lifestyle.

POSES WITH A PANORAMA



A yoga studio surrounded by floor-to-ceiling windows, where every pose opens to sweeping views.

THE GAMING ARENA



No bleachers, no buzzers. Just relaxed seating, a warm hearth, and the quiet joy of unwinding together.



From pool to foosball to darts, this side is less about winning and more about playing.

AT THE WATER'S EDGE

The two bar areas make it easy to grab a drink or a bite without ever leaving the deck. With the greenery around and the city in the distance, the pool becomes the kind of place you want to spend time in, not just pass through. Rest and recreation come together naturally.





Here, you don't have to choose between swimming and lounging. It's all part of the same experience.

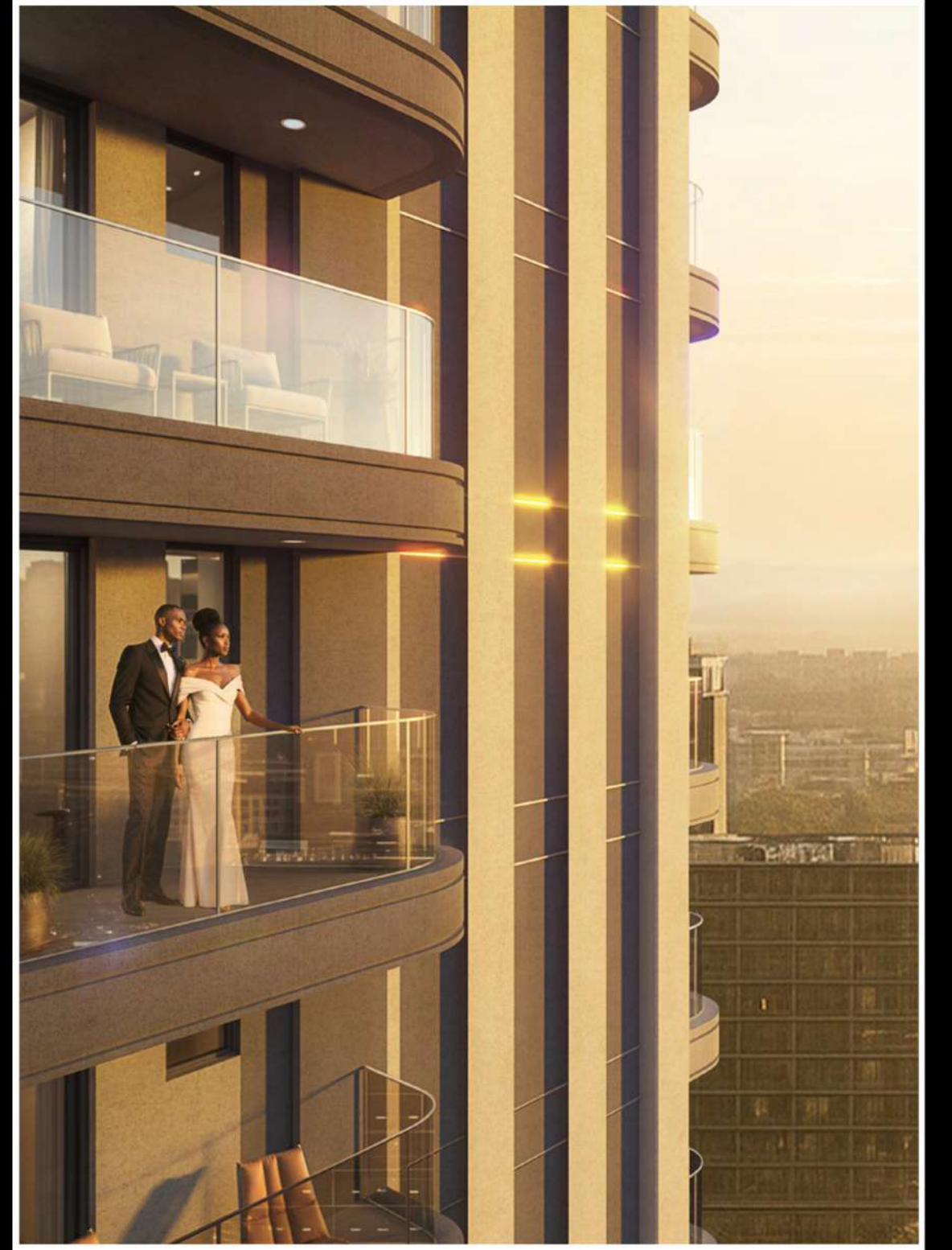
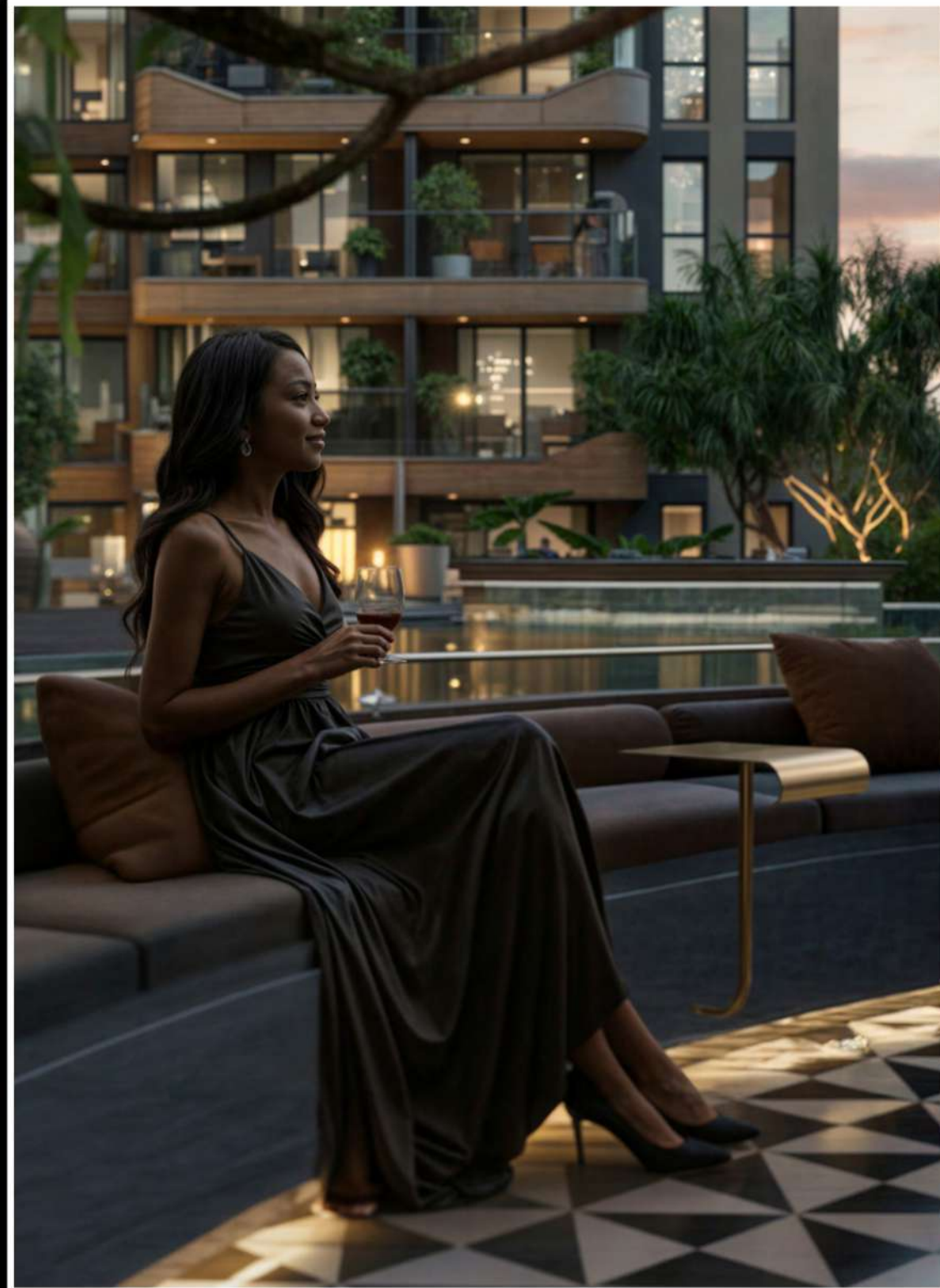
A PALACE IN THE SKY



Sculptural lines, greenery, and seating made for gathering give the terrace a palace feel in the open sky. Set opposite the pool, the lounge balances open skyline views with the comfort of an intimate square setting. It's a rooftop for quiet moments, evenings you wish would last, and a place to pause, share a drink, or simply enjoy Nairobi from above.



With a location like Westlands, you've got all the best business, lifestyle, and cultural spots right at your doorstep, so it's no surprise that residents and investors alike find it so appealing. Hephe Palace is built to last, offering the perfect mix of immediate appeal and long-term value.





Development Consultants

AFRIMAC INTERNATIONAL LIMITED



AFRIMAC

Jalaram Road, Westlands.

CONTACT: 0721 939 689

EMAIL: sales@afrimacinternational.com

WEBSITE: www.afrimacinternational.com

Afrimac International Limited for themselves and for the vendors of this property whose agents they are, give notice that these particulars do not constitute any part of an offer or a contract nor are these guaranteed to be accurate under any circumstances